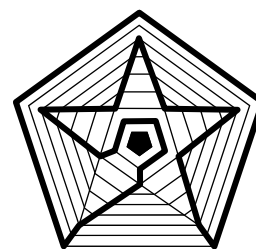


# SHORT CIRCUIT

Newsletter of  
the Canberra Mathematical Association INC



VOLUME 3, NUMBER 1

FEBRUARY, 2012

## Coming Events:

- February 24 *Welcome drinks function. ACU Rose garden—4:30 p.m.*  
March 5 *Committee Meeting—Hawker College, 7 p.m.*  
August 17-18 *CMA Annual Conference. Australian Catholic University*  
November 9 *The 314th day of the year—Pi day!*  
November 14 *CMA Annual General Meeting*

## FROM THE EDITORS

With the new teaching year well under way, we would like to remind you, esteemed readers, to renew your CMA memberships very soon to avoid a delay in receiving your journals and other mailouts from AAMT. Follow the link to our website where you will find the membership form, or come to the welcome function on 24 February to sign up in person.

For 2012 the cost of CMA membership will be unchanged from last year.

Primary teachers may be interested in a professional development opportunity

organised by Origo Education on 21 July at Narellan Vale. See the advertisement on page 6 for details.

Readers are invited to submit items for publication in this newsletter. Submissions could include:

- \* Reports or commentary on events and developments related to mathematics education in your school or system.
- \* Short articles about mathematics education or about mathematics itself.
- \* Problems, puzzles and educational activities suitable for primary, secondary and college students
- \* URLs and reviews of use-

ful websites.

Short Circuit is jointly edited by Paul Turner and Jurek Paradowski.

Contributions can be sent by e-mail to paul.turner@ed.act.edu.au 6205 8104

or to jurek.paradowski@ed.act.edu.au 0433 647 694

Alternatively, you can use the CMA mailing address: PO Box 3572, Weston ACT 2611.

We welcome your feedback.

## MEMBERSHIP

Membership of the CMA includes automatic affiliation with the Australian Association of Mathematics Teachers and a free AAMT journal.

Members are entitled to cheaper rates for CMA professional development events and the annual conference.

A membership application form for the CMA can be downloaded from our website:

[www.canberramaths.org.au](http://www.canberramaths.org.au)

## WELCOME

The Welcome drinks function is on **today**, 24 February, 4.30 p.m. in the Rose Garden at the Australian Catholic University, Antill Street, Watson.



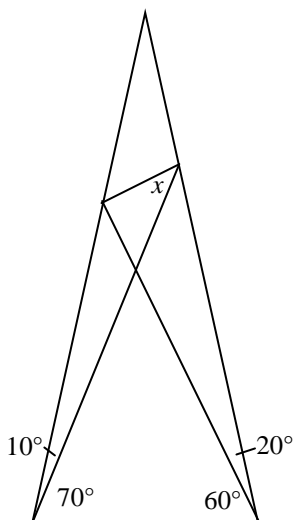
Find us on Facebook

Note:

Receipts for membership payments are normally sent out by e-mail. If you have paid for your membership but have not received a receipt or if your AAMT journal(s) have not been arriving, please advise CMA treasurer, Paul Turner, or a committee member.

## SHORT CIRCUIT

### PROBLEM



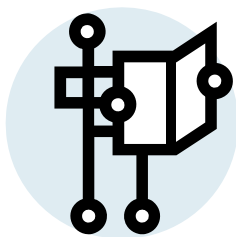
This problem has appeared recently on the AAMT e-mail list.

*Basic geometry*

It is claimed that the value of angle  $x$  can be deduced by basic geometric methods—parallel lines, similar triangles and the like. The problem is notoriously difficult.

?

It can be solved using 3 applications of the sine rule and one of the cosine rule, but as the problem was originally posed, trigonometry is not allowed.



## MOSADDEQUE ALI FAMILY FUND

*From Kerrie Grundy, Principal Narrabundah College*

*Dear Colleagues*

*If you wish to support the young family of Mos Ali who passed away unexpectedly last December please find below the account details.*

*The account details for the Mosaddeque Ali family are:*

*Westpac BSB / Account : 732729 / 625092*

*Account designator: ATF Mosaddeque Ali*

*We will close this account in early March 2012.*

Regards

Kerrie.

**Kerrie Grundy**, Principal  
Narrabundah College

## USEFUL LINKS

EMPHASiS, newsletter for the Scientists in Schools(SiS) program, and its sub-program Mathematicians in Schools(MiS). Latest edition:

[http://www.scientistsinschools.edu.au/downloads/newsletter/EMPHASiS\\_Issue\\_05\\_September\\_2011.pdf](http://www.scientistsinschools.edu.au/downloads/newsletter/EMPHASiS_Issue_05_September_2011.pdf)

Australian Curriculum website: <http://www.australiancurriculum.edu.au/Mathematics/Curriculum/F-10>

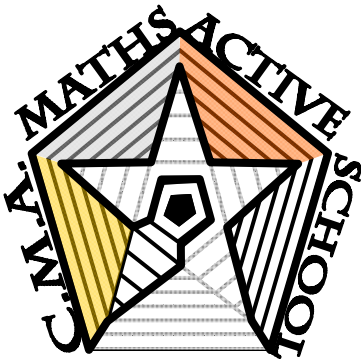
CSIRO: Maths by Email: <http://www.csiro.au/resources/Maths-by-Email.html>

AAMT: <http://www.aamt.edu.au>

Australian Bureau of Statistics project: Census at School <http://www.abs.gov.au/censusatschool>

ABS news: <http://www.abs.gov.au/ausstats/abs@.nsf/mf/1330.0?OpenDocument>

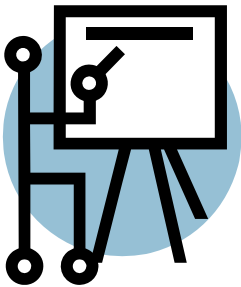
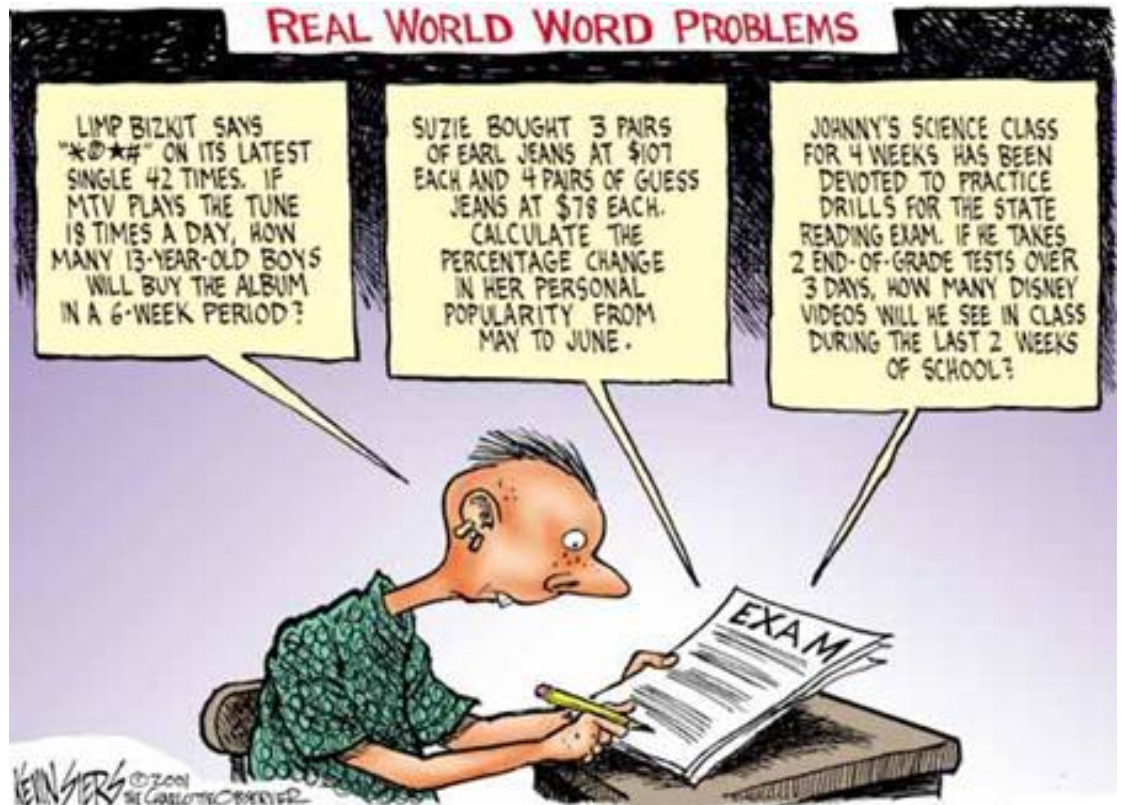
Mathematical Association of WA on-line quiz: <http://www.havesumfunonline.com>



## MATHS ACTIVE SCHOOLS

*Is yours a Maths Active School?*

*If not, talk to Jurek Paradowski about what it means and how it's done.*



**AAMT**

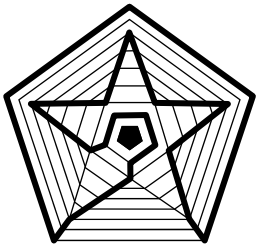
### NEW AAMT CONSTITUTION

A new constitution was approved by the AAMT Council at its January meeting which has now come into effect. One of the changes affecting New South Wales and South Australia is that each State/Territory is now represented by a single association. AAMT no longer has an Executive, and instead is governed by a smaller Council made up of a representative of each State/Territory affiliated association, along with a Treasurer (new Treasurer David Keanan-Brown, NSW), President (new President Kim Beswick, Tas.), and either President Elect or Immediate Past President (Peter Sullivan, Vic.). Contact your local association to contact your AAMT Councillor.

The new constitution is available at <http://www.aamt.edu.au/About-AAMT/Constitution>

### KEEP INFORMED

Anyone, member or not, can sign up to receive emails from AAMT with news of events and developments -- so why not invite other staff members in your workplace to receive them directly. Contact Toby Spencer at the AAMT office ( [tspencer@aamt.edu.au](mailto:tspencer@aamt.edu.au) ) or go to <http://www.aamt.edu.au/News> for instructions. Alternatively, you can like AAMT's Facebook page (<http://www.facebook.com/aamtinc>) or follow @aamtinc on Twitter (<http://twitter.com/aamtinc>)



**NEWSLETTER OF  
THE CANBERRA MATHEMATICAL  
ASSOCIATION INC**

PO Box 3572  
Weston ACT 2611  
Australia

E-mail: [canberramaths@yahoo.com.au](mailto:canberramaths@yahoo.com.au)

## ABOUT THE CMA

The Canberra Mathematical Association (Inc.) is the representative body of professional educators of mathematics in Canberra, Australia.

It was established by, among others, the late Professor Bernhard Neumann in 1965. It continues to run - as it began - purely on a volunteer basis.

Its aims include

- \* the promotion of mathematical education to government through lobbying,
- \* the development, application and dissemination of mathematical knowledge within Canberra through in-service opportunities, and
- \* facilitating effective cooperation and collaboration between mathematics teachers and their colleagues in Canberra.

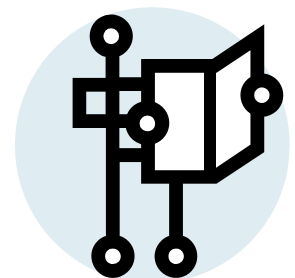
We're on the Web!

<http://www.canberramaths.org.au>

## THE 2012 CMA COMMITTEE

President	Erin Gallagher
Vice Presidents	Jurek Paradowski Sue Wilson
Secretary	Theresa Shellshear
Treasurer	Paul Turner
Councillors	Claire Hirschfeld Heather Wardrop Andy Wardrop Toby Hartley Evelyn Ashcroft Jo Kellow Patricia Tandy Jeffery Mansfield Peter McIntyre Igraine Ridley-Smith

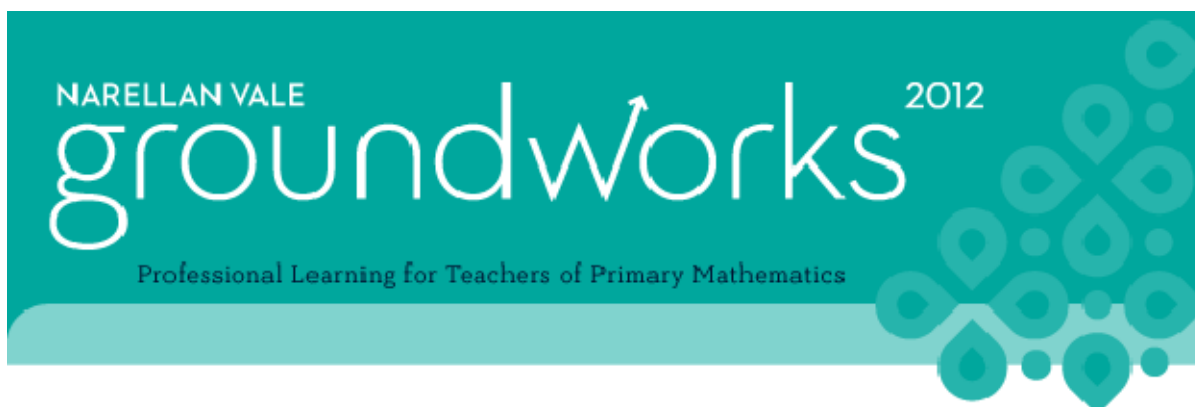
Hawker College
Calwell High School
Australian Catholic University
Australian Catholic University
Erindale College
Lyneham High School
Lake Tuggeranong College
Erindale College
Hawker College
Melba Copland Secondary School
Stromlo High School
Melrose High School
Melrose High School
University of NSW—ADFA
Calwell High School



**Find us on Facebook**

<http://www.facebook.com/pages/Canberra-Mathematical-Association/110629419011275>

Advertisement: ORIGO Education



Saturday 21 July 2012 – Narellan Vale, NSW

[Register today](#) for your choice of sessions presented by:

Brian Tickle • Anita Chin • Rob Nickerson • Peter Stowasser

### Session Topics

#### Session 1

- Games that Develop Understanding of Chance and Data - *Brian Tickle*
- Be Strategic: Building Computational Fluency for Addition/Subtraction - *Rob Nickerson*
- Developing a Deep Understanding of Fractions (And Decimals) - *Peter Stowasser*

#### Session 2

- Misconceptions: From Misunderstanding to Deep Understanding - *Brian Tickle*
- Problem Solving: A Way of Thinking - *Rob Nickerson*
- Differentiating Instruction: Place Value Concepts - *Anita Chin*

#### Session 3

- Be Strategic: Building Computational Fluency for Multiplication/Division - *Rob Nickerson*
- Thinking and Talking Like a Mathematician - *Anita Chin*
- Using Number Puzzles to Promote Number Sense and Mental Computation - *Peter Stowasser*

For more information and to register, visit [www.origoeducation.com/groundworks](http://www.origoeducation.com/groundworks)

