

re (Solve)

MATHS BY
INQUIRY

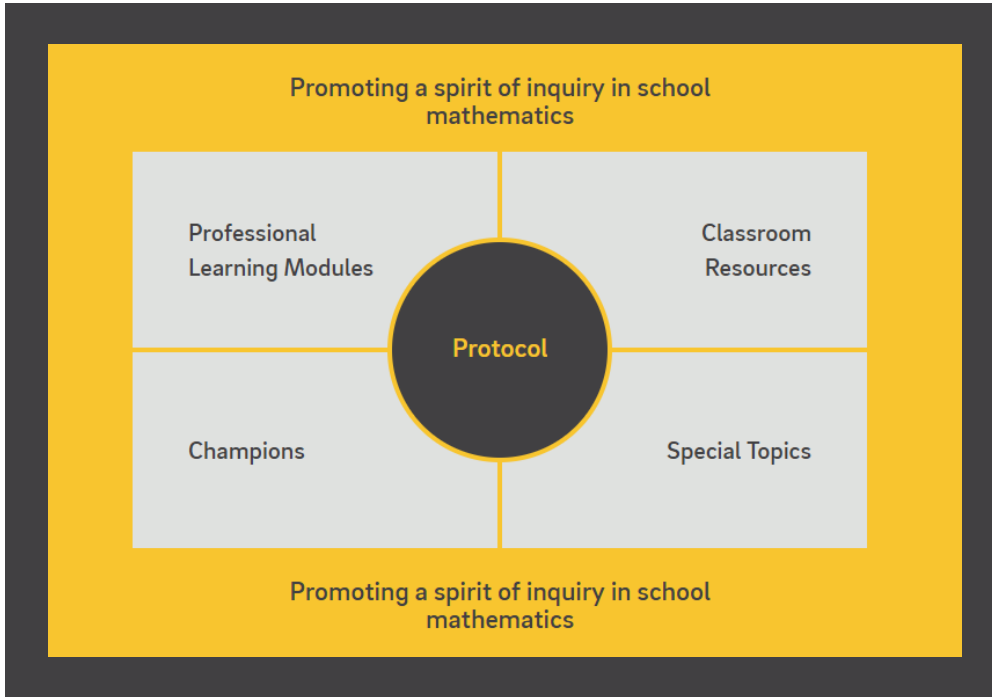


Australian Academy of Science



Mathematics by Inquiry is an initiative of, and funded by, the Australian Government Department of Education and Training

*Promoting a spirit of inquiry
in school mathematics*



reSolve Protocol

reSolve mathematics is purposeful

reSolve tasks are inclusive and challenging

reSolve classrooms have a knowledge-building culture

RESPONSE-ABILITY

A large pile of discarded plastic water bottles and ice cubes, with a central text overlay. The bottles are mostly clear plastic with blue labels, some of which are partially visible. The ice cubes are scattered throughout the pile. The overall color scheme is a cool blue. The text "WHY? WHY NOT?" is centered in a white, semi-transparent box.

WHY? WHY NOT?

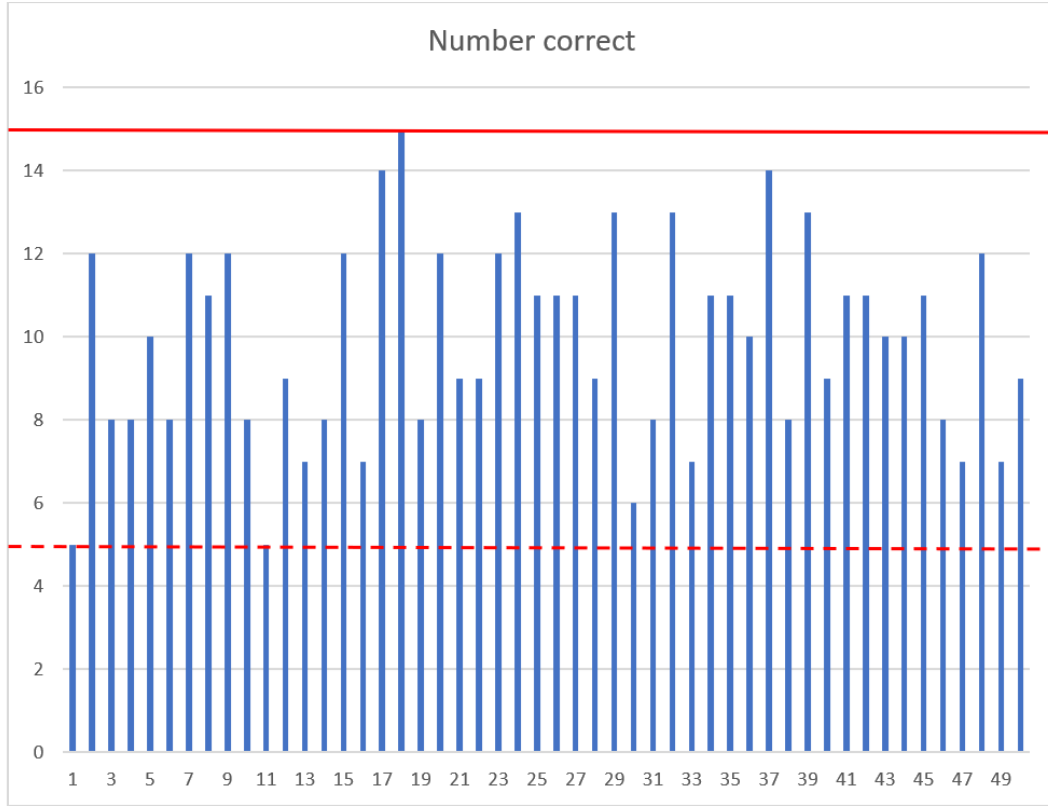


The Taste of Water

Bottled water tastes different to tap water

What would convince you that someone can taste the difference between tap or bottled water...

- Would 50% correct be enough?
- Do you need to get 100%?
- Or is it somewhere in between?



Social Profiling

Who is your subject?

Tell their story.



Facebook → Account Settings → Ads



adssettings.google.com

google.com.au/maps/timeline



Settings → Privacy → Location Settings → System Services → Significant Locations



iknowwhereyourcatlives.com

RESPONSE-ABILITY

re (Solve)

MATHS BY
INQUIRY



Australian Academy of Science



Mathematics by Inquiry is an initiative of, and funded by, the Australian Government Department of Education and Training