

SHORT CIRCUIT

Newsletter of
the Canberra Mathematical Association INC

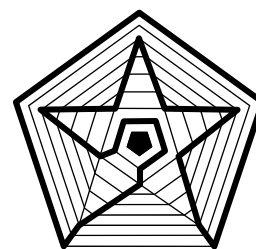
Coming Events:

August 18 CMA Annual Conference. Australian Catholic University

August 27—September 2 National Literacy and Numeracy Week

November 9 The 314th day of the year—Pi day!

November 14 CMA Annual General Meeting

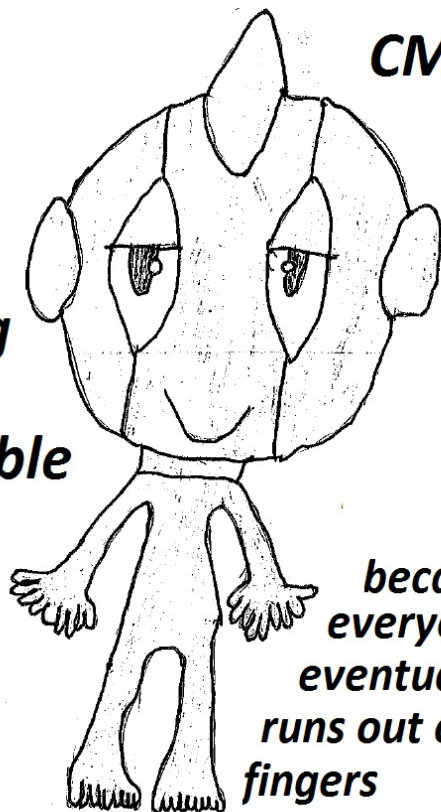


VOLUME 3, NUMBER 3

JULY, 2012

FROM THE EDITORS

**making
maths
accessible**



CMA 2012

**because
everyone
eventually
runs out of
fingers**

The CMA Annual Conference is upon us! Here is the winning entry in our logo competition. It was created by Conall Minchin from Maribyrnong Primary School. Well done Conall! The logo competition attracted 18 entries from 3 schools.



Find us on Facebook

This one made the judges laugh the most. All the entries will be on display at the conference.

The conference is on Saturday 18th August. Register now through the CMA website:

<http://canberramaths.weebly.com/>

Check the program details on page three.

MEMBERSHIP

Membership of the CMA includes automatic affiliation with the Australian Association of Mathematics Teachers and a free AAMT journal.

Members are entitled to cheaper rates for CMA professional development events and the annual conference.

A membership application form for the CMA can be downloaded from our website:

<http://canberramaths.weebly.com/>

Note:

Receipts for membership payments are normally sent out by e-mail. If you have paid for your membership but have not received a receipt or if your AAMT journal(s) have not been arriving, please advise CMA treasurer, Paul Turner, or a committee member.

SHORT CIRCUIT

PUZZLE

Based on Galileo:

A point P moves so that its distance from the origin is k times its distance from the point $A(1,0)$, with $k > 1$. What is the value of k that creates a simple closed curve of area π ?

Locus

i-APPS WORTH A LOOK

Wolfram Alpha

Wolfram Calculus

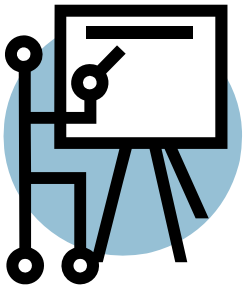
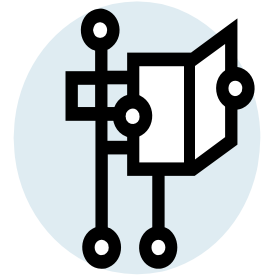
Redshift (astronomy)

Sky View (astronomy)

[FRANGO CAMERA](#) by Michael Barnsley

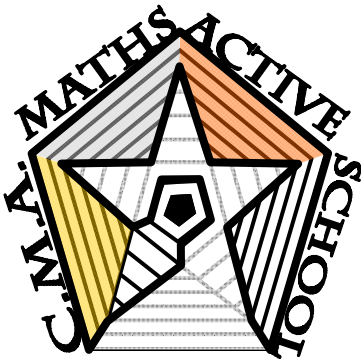
LINKS

[Mrbartonmaths](#) resources, reviews, videos



INNOVATIONS

Watch this space



MATHS ACTIVE SCHOOLS

Is yours a Maths Active School?

If not, talk to Jurek Paradowski about what it means and how it's done.

Melrose wins silver

Congratulations to Melrose High School for achieving Maths Active School status at the Silver level.

2012 CMA CONFERENCE

MAKING MATHS ACCESSIBLE

PRESENTERS

More details about the presenters and their presentations are available on the flyer and on the CMA website

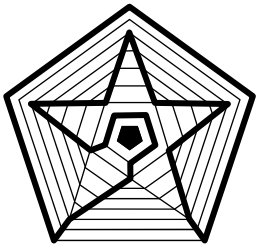
Keynote speakers

Catherine Attard Lecturer, Mathematics Education, University of Western Sydney
Engaging Students to Make Maths Accessible

Colin Pask Emeritus Professor of Mathematics, UNSW, Canberra

Workshops

| | | |
|------------------------|---|--|
| Mary-Anne Aram | Australian Bureau of Statistics | <i>Census at School</i> |
| Catherine Attard | Keynote speaker | <i>Number and Algebra strand</i> |
| Louisa Barnsley | ANU | <i>Fractals and iPads</i> |
| Michelle Button | Mangahigh.com | <i>Teach maths with games using Mangahigh.com</i> |
| Kevin McMenamin | Casio | <i>CAS technology in the classroom</i> |
| Bruce Ferrington | Radford College | <i>Making it happen in the primary classroom</i> |
| Peter Fox | Elisabeth Murdoch College, Vic. and Texas Instruments | |
| | | <i>1. Investigation in Middle School Mathematics for the National Curriculum</i> |
| | | <i>2. Visualizing Mathematics—using technology to support understanding</i> |
| Billie Ganendran | UNSW, Canberra | <i>About penguins</i> |
| Steve Hood | Kaleen High School | <i>Scootle</i> |
| Peter McIntyre | UNSW, Canberra | <i>Modelling and dung-beetle vision</i> |
| Allan Power | Mymathsonline | <i>MyMaths engages teachers and students</i> |
| Steve Roberts | ANU | <i>ANU Maths Day</i> |
| Paul Turner, Ruth Edge | Erindale College | <i>The Fertile Question—an update</i> |
| Andy Wardrop | Erindale College | <i>Speed cameras</i> |
| Chris Wetherell | Radford College | <i>Paper Folding</i> |
| Sue Wilson | ACU, Canberra | <i>Reach for the Stars</i> |



**NEWSLETTER OF
THE CANBERRA MATHEMATICAL
ASSOCIATION INC**

PO Box 3572
Weston ACT 2611
Australia

E-mail: canberramaths@yahoo.com.au

ABOUT THE CMA

The Canberra Mathematical Association (Inc.) is the representative body of professional educators of mathematics in Canberra, Australia.

It was established by, among others, the late Professor Bernhard Neumann in 1965. It continues to run - as it began - purely on a volunteer basis.

Its aims include

- * the promotion of mathematical education to government through lobbying,
- * the development, application and dissemination of mathematical knowledge within Canberra through in-service opportunities, and
- * facilitating effective cooperation and collaboration between mathematics teachers and their colleagues in Canberra.

We're on the Web!

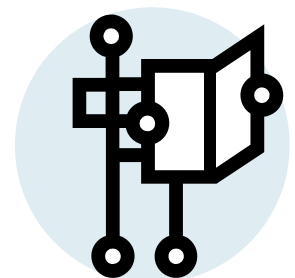
<http://canberramaths.weebly.com/>

<http://www.canberramaths.org.au>

THE 2012 CMA COMMITTEE

President Erin Gallagher
Vice Presidents Jurek Paradowski
Sue Wilson
Secretary Theresa Shellshear
Treasurer Paul Turner
Councillors Claire Hirschfeld
Heather Wardrop
Andy Wardrop
Toby Hartley
Evelyn Ashcroft
Jo Kellow
Patricia Tandy
Jeffery Mansfield
Peter McIntyre
Igraine Ridley-Smith

Hawker College
Calwell High School
Australian Catholic University
Australian Catholic University
Erindale College
Lyneham High School
Lake Tuggeranong College
Erindale College
Hawker College
Melba Copland Secondary School
Stromlo High School
Melrose High School
Melrose High School
University of NSW—ADFA
Calwell High School



Find us on Facebook

<http://www.facebook.com/pages/Canberra-Mathematical-Association/110629419011275>

HOW TO REGISTER FOR THE CONFERENCE

Please register on-line if possible and pay by one of the methods listed below.

Alternatively, e-mail this information to

paul.turner@ed.act.edu.au

or post to CMA, PO Box 3572, Weston ACT 2611

Name:

School:

Address:

Contact Phone Number:

Are you a member of CMA? Yes No

ATTENDANCE:

| | Member | Concession | Non-member |
|----------------|--------|------------|------------|
| Full (Fri-Sat) | \$90 | \$40 | \$120 |

| | | |
|------------------------|-----|----|
| President's Happy Hour | Yes | No |
|------------------------|-----|----|

METHOD OF PAYMENT:

Enclosed a cheque/money order payable to CMA

or

Pay on the day. (A delay at the door is likely.)

or

I have paid online. Please put your surname and initials when naming the payment

e.g. SMITH FR pay to:

BSB: 805- 022 **Account #** 4071021 Canberra Mathematical Association

A receipt will be issued as you collect your name badge at the conference.

Remember, an *Institutional Membership* entitles the school/institution to two (2) only non-members attending the conference as members—not the whole institution!

You can join CMA on the day or join now using the membership form on the CMA website.

| |
|---|
| If you are bringing a cheque from your school as payment on the day of the conference, contact us and ask for an Invoice prior to the conference. |
|---|